

WIC News in Alabama

Volume 17 - No. 4

Spring 2012



See What's Inside

PROMOTING HEALTHY WOMEN, INFANTS, AND CHILDREN
IN ALABAMA



Central Office
News

Special Feature:
Retirement of
Debbie Patterson

Area News

Central Office News



Nutrition Services

Jean Fulton, Director

WIC Nutrition Services Update

The Nutrition Services Branch extends greetings to each of you! The staff is working diligently as we prepare for User Acceptance Training (UAT) for Crossroads State Agency Model (SAM). The focus of WIC training statewide this year will be preparing our staff for implementation of the new computer system. We are excited about the new system and look forward to sharing its features with you.

The new My Plate nutrition education materials, English and Spanish, were shipped to the clinics in February. USDA designed My Plate to replace the Food Guide Pyramid. Secretary of Agriculture Tom Vilsack stated, "My Plate is a truly simple, powerful visual cue to help people adopt healthy eating habits at meal times." The new design emphasizes several important nutrition messages: eat smaller portions, make at least half the plate fruits and vegetables and avoid sugary drinks.

Outreach efforts are on-going to help ensure that potentially eligible families are aware of WIC services. The primary vehicle for our message this year is the internet. Look for the Alabama WIC message on the al.com homepage.

The Breastfeeding Peer Counselor Program as an adjunct to our other efforts to promote and support breastfeeding among WIC participants continues to grow. We are excited about plans for expanding the program to more clinics in 2012. The current Surgeon General, Dr. Regina Benjamin of Alabama, formally outlines her support of breastfeeding and its impact on health in "The Surgeon General's Call to Action to Support Breastfeeding."

While we say farewell to a valued WIC staff member, Cassandra Glover, we wish her well in her new position! Cassandra served as clerk for the Eastbrook WIC Training Clinic for almost four years. During that time she helped train a number of WIC clerks from other clinics and provided excellent service to the participants of the training clinic.

The new WIC clerk at the training clinic is Sakitha Hall. Sakitha joins the training clinic team from Lowndes County Health Department. Welcome Sakitha!

The Alabama WIC Program



The Division of WIC takes great pleasure in recognizing one of its original employees, Debbie Patterson. Debbie, along with Jim Welch while under the leadership of long time WIC Director, James Richard, brought WIC from its inception all the way through the Alabama Clinic Level Automation System (ALACLAS) and into the Public Health of Alabama County Operations Network (PHALCON) era.

Debbie was also very instrumental in the implementation of the ALACLAS and PHALCON training for all of the Alabama WIC employees statewide. In addition, Debbie was in on the ground floor for the design of the Crossroads State Agency Model (SAM) Management Information System (MIS) that is scheduled to be implemented in Alabama, North Carolina, Virginia, and West Virginia.

We are so proud to have known and worked with an employee of the caliber of Debbie Patterson. Debbie's hard work, dedication, and loyalty to the Alabama Department of Public Health has been astounding. She has set a standard for all Alabama State employees in every arena. We wish you all the best, Debbie!!

A Word From Debbie Patterson



Debbie Patterson

After many years with the State of Alabama, Department of Public Health, I am retiring.

To work with the Alabama Department of Public Health for more than 30 years has been a great journey. I started out in Cancer Detection in 1980 with Dr. Fred Wolf, Dr. Ira L. Myers, Grover Dick, Max Cain and then in Family Health Services with Dr. Beverly Boyd, Director; Lawrence O. Gulley, Deputy Director; James Richard, Director of WIC; and Wendy Blackmon, Director of WIC until the year 2000. I've worked with all of the programs under the Family Health Services umbrella (Adult Health, Disease Control including HIV, STD, TB, HYP, EPI, IMM, DM, FP, WIC and Maternity Care).

During the many years with Family Health Services, I've documented, tested, and trained the Alabama Clinic Level Automation System (ALACLAS) and the Public Health of Alabama County Operations Network (PHALCON) online systems for Family Health Services programs with integration to Immunization Provider Registry with Internet Technology (IMMPRINT), the statewide population-based information system for all children born in Alabama since January 1, 1993, and IMMPRINT and Lab Information Management System (LIMS), the information management system that offers a set of key features that support our State laboratory's operations.

In January 2000, I began to work for the Bureau of Information Technology, Systems Development with John Heitman, Claire Poage, Steve Hill and Regina Patterson. While there, I continued to document, test, train, and field questions from the Support Desk about PHALCON, ImmPRINT, LIMS and Family Health Services.

Before I began my journey with the Alabama Department of Public Health, as a student and temp worker, I worked for the Department of Revenue (Income Tax) and the Department of Industrial Relations (Unemployment Benefits).

Personally, I look forward to looking back over these years with great pride! I will truly enjoy having quality time with my family, especially my Mom and my two "great" grandchildren, Ivan and Ian.

In looking back over the years of working with a huge extended family, I have come to know that time and energy are our greatest assets and we are never too poor to share. I look forward to using and sharing these most valuable assets with both my family and my community.

Thank you and it has been a pleasure!

Debbie Patterson's Retirement Celebration



L to R: John Heitman and Debbie Patterson



L to R: Shelisa Turner, Debbie Patterson, and Mike Carnley



L to R: Gene Hill and Debbie Patterson



A Trip Down WIC Memory Lane With Debbie Patterson



*Left: Debbie Patterson - WIC Office - 1994; Top Center: Debbie Patterson - WIC Conference
Bottom Center: Debbie Patterson - WIC Office - 1988, and Right: Debbie Patterson - WIC Office - 1993*



L to R: Cindy Conner, Jim Welch, Debbie Patterson, and other WIC and Clinic Staff at one of WIC's early conferences that began in the late 1980s.



L to R: Debbie Patterson, Dr. Thomas Miller, and Dr. Williamson, State Health Officer in attendance at the ALACLAS Open House at Eastbrook WIC Training Clinic, May 11, 1993.



L to R: Dr. Thomas Miller, Debbie Patterson, Wendy Blackmon, Bob Hafner, Eddie Rimbart, Gene Hill, John Heitman, and Chuck Langley at ALACLAS Open House at Eastbrook WIC Training Clinic, May 11, 1993.





Dianne Lollar, Area 1 Nutrition Director

Area 1

Area 1 WIC Coordinators and the Lauderdale County Health Department contributed canned foods to Loaves and Fishes Food Distribution Center in Florence, Alabama, during the December WIC Coordinator's staff meeting. Loaves and Fishes serves hundreds of people that qualify for food assistance.

Kisha Cobb, Director of Social Services for Loaves and Fishes, accepted the donation and spoke to the group about the various services that are provided by Loaves and Fishes each month.



L to R: Blake Stone, Beth Romo, Danna Rutz, Kisha Cobb, Leigh Ann Colvin, Paige Taylor, Wanda Wells and Dianne Lollar

Walker County

While awaiting her dietetic internship assignment, Margaret Able, dietetic graduate of the University of Alabama, volunteered with the Walker County WIC Program from January 2012 to March 2012. She designed and completed the bulletin board message on eating more fruits and vegetables for the clinic.



Margaret Able, Dietetic Graduate of the University of Alabama and Walker County Health Department volunteer, designed the More Fruits and Veggies bulletin board

Leigh Ann Colvin, WIC Coordinator of Walker County participated in the Walker Baptist Health Fair at the Jasper Mall on November 4, 2011. The WIC exhibit had several hundred visitors who learned about the WIC Program and its benefits.



L to R: Leigh Ann Colvin, Walker County WIC Coordinator, and Dianne Lollar, WIC Area Nutrition Director



Shelia Osborn, Area 2 Nutrition Director

Area 2

In Memorium of Mary Jane Sloan (January 1, 1959 - November 25, 2011) Friend and Co-Worker

Mary Jane began her career with the Madison County Health Department, 304 Eustis Avenue, Huntsville in October 1989. She worked as a Clerk at the front desk before moving to the Cavalry Hill Clinic to provide clerical support to the Family Planning, Immunization and Pediatric Clinics. When the Cavalry Hill Clinic closed in 1995, Mary Jane moved back to 304 Eustis where she continued providing clerical support for clinical services as well as becoming a Deputy Registrar and assisting in Vital Statistics. In 2005, Mary Jane moved into WIC where she remained until her death.

Throughout her 22 year career, Mary Jane was always willing to take on new responsibilities with dedication. There are very few support positions at the Madison County Health Department that Mary Jane didn't do, or know how to do. Despite her quiet demeanor, Mary Jane had a quick smile, rapid wit and an infectious laugh. She was kind and thoughtful as a friend and a hardworking, conscientious co-worker.

Mary Jane is, and will continue to be missed by us all. Rest in peace, Mary Jane, until we meet again...



Mary Jane Sloan, Clerk, Madison County

Limestone County

Retirement Announcement for Eileen King:

We are both delighted and disheartened to announce that Eileen King has retired. Her last day with the Alabama Department of Public Health (ADPH) was March 1, 2012.

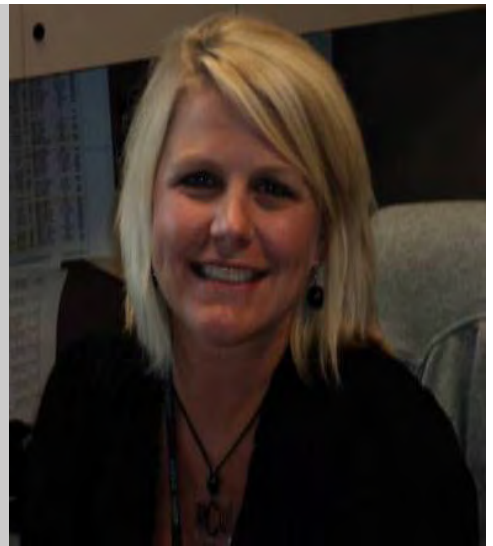
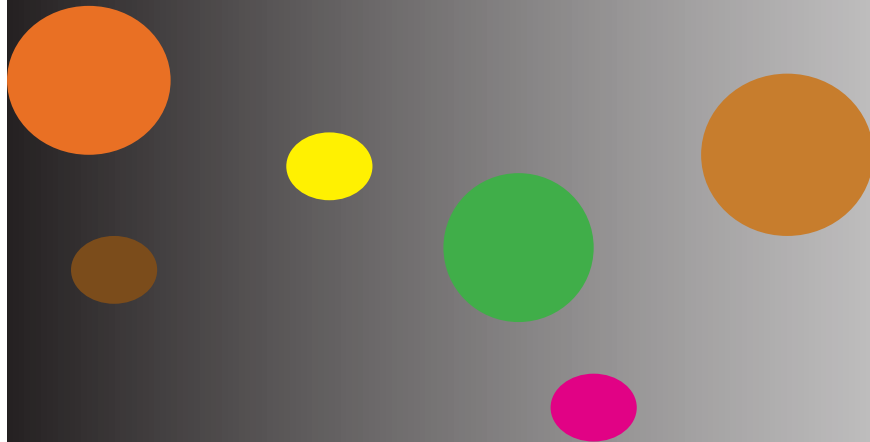
Eileen has been an outstanding employee throughout the years. She served as a registered nurse in the public health sector for 25 years. She served as WIC Coordinator in Limestone County for eleven years. Her willingness to invest the extra time and effort to help patients demonstrated a commitment to excellence that we came to rely upon over the years.

In addition to her incredible competence and skill, she was a friend to all of us with her thoughtfulness and quiet encouragement. She will be greatly missed by patients and colleagues alike. We wish Eileen well as she starts a new chapter in her life. We know she is eager to spend time with her husband, Roger, her three sons, and their families. She also wants to devote more time to church activities and her love of gardening.



Eileen King, RN, WIC Coordinator, Limestone County

Renee Cole, Area 3 Nutrition Director



Area 3

Sailaja Reddy recently attended a “Spring Fling” community event in Tuscaloosa, Alabama. Sailaja handed out WIC information stickers, information on physical activity, and information for healthy eating. Activities included egg decorating, an egg hunt, inflatables at several game stations, and other activities available for the kids in the community.



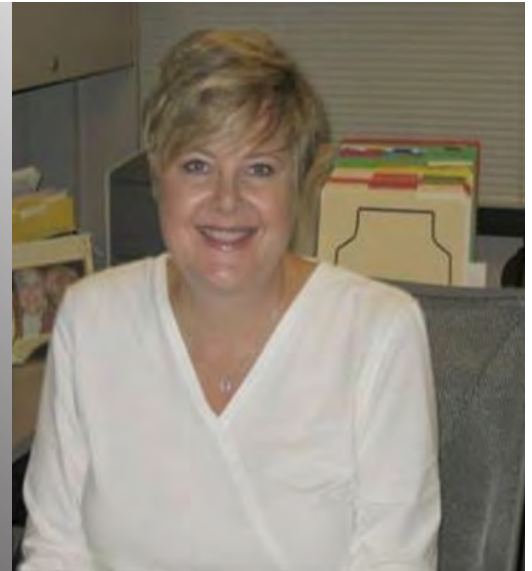
Sailaja Reddy manning the WIC table at “Spring Fling” event in Tuscaloosa County.

Gloria Lewis attended a large wellness and health fair at Shelton State Community College in Tuscaloosa, Alabama. She had a wide array of nutrition education brochures and WIC eligibility information available to pass out to prospective participants.



Gloria Lewis, Nutrition Associate, attended health fair at Shelton State Community College in Tuscaloosa

Jeanne Baker, Area 4 Nutrition Director



Area 4 - Jefferson County

The year 2012 has already been a very eventful year for the Jefferson County Health Department. The retirement of 72 employees, most of which left the last week of December, the appointment of a new Health officer, Mark Wilson, the closing of Bessemer Health Center, and the ground breaking for the New West Clinic in Fairfield. All of this on top of continued renovations of the Guy Tate Building which houses all of the services of the Jefferson County Health Department (JCDH) as well as Central Health Center. To say it has been a little chaotic around here would be an understatement.

A retirement incentive was offered and accepted by 72 employees in October 2011, six of whom were part of our WIC family. Three providers and three medical clerks accepted the generous incentive and seeing them off was both joyful and sorrowful. Together these six ladies had dedicated 158 years and 4 months of their lives to public health. All but one had earned all of their years working with the Alabama WIC program.

Brenda Kennedy, Medical Clerk, had the most years of service with 36 years and 10 months. She worked as a medical clerk at the Northern Health Center for most of her service and was assigned to the Western Health Center after Northern closed in 2009. Brenda was a dedicated employee and worked side by side with the providers to ensure that the WIC clients received the services they needed.



Brenda Kennedy, served as the Medical Clerk at Northern Health Center until its closing in 2009. She was then assigned to the Western Health Center for the remainder of her over 36 years of service.

Suman Madan, Senior Nutrition Consultant at West End Health Center, retired with 31 years and 10 months of service. Suman spent almost her entire career with WIC at Northern Health Center. After the Center closed in 2009, she resumed her job at West End Health Center. Suman was truly a patient-centered employee. She was always eager to assist the WIC participants in any way



she could and loved providing nutrition education and promoting the WIC program. She was always the first to come up with ideas for education activities and displays and enjoyed participating in outreach.

Suman Madan, Senior Nutrition Consultant at West End Health Center. Most of her over 31 years of service was spent at Northern Health Center until its closing in 2009.

Brenda Howard began working for the Jefferson County Department of Public Health on April 12, 1993, as a WIC clerk at Eastern Health Center and remained there until she retired after 18 years and 8 months. She was very friendly and pleasant and all of her co-workers enjoyed working with her. During all of her years she was never late for work and never called in sick. She would go above and beyond what was expected of her to meet the needs of the participants, and they all loved her. Brenda hated being photographed and no photo could be found for this article.

Jefferson County (cont.)

Janet Bedsole, Senior Nutrition Consultant at Bessemer Health Center, retired after 27 years and 8 months. Janet was a dependable staff member with a strong work ethic. Janet coordinated the WIC program at Bessemer Health Center for the majority of her career. She took great care in making certain that the program was administered according to guidelines and that the needs of her patients were met. She is currently working at Western Health Center in a temporary position and plans to return to the Jefferson County WIC Program part-time after her temporary term expires.



Janet Bedsole, Senior Nutrition Consultant, retired from Bessemer Health Center after over 27 years and is currently working at Western Health Center

Acquinetta White, Registered Nurse, WIC Provider at Central Health Center, retired with 22 years and one month of service. Acquinetta was a public health nurse and served all of her years at Central Health Center, first as a maternity nurse and then as a WIC provider. Her supervisor referred to her as a work horse which is truly appropriate. When the Jefferson County Health Department began seeing Hispanic clients in the 1990's, they were unprepared for the language barrier. Acquinetta immediately began to learn the basic language she needed to take care of her maternity patients. When she came to work with the WIC Program, her knowledge of maternity care, ability to speak Spanish, and willingness to learn made her an asset. Replacing her does not seem possible.



Acquinetta White, RN, served at the Central Health Center as a Maternity nurse and later as the WIC Provider with a total of over 22 years of service

Barbara Brown worked for the Jefferson County Health Department for 21 years and 3 months. For the last 17 years, she served as the WIC Clerk at Morris Health Center. She was always courteous and kind with all of the clients and with co-workers. She was a very competent and dependable worker who performed her duties with a spirit of excellence. The participants looked forward to seeing her at their visits to the WIC office. They were very comfortable calling "Ms. Barbara" with any concerns and questions they had. Her kindness and expertise will be missed by co-workers and WIC clients.



Barbara Brown served as the WIC clerk at Morris Health Center for the last 17 of her over 21 year total with the Jefferson County Health Department

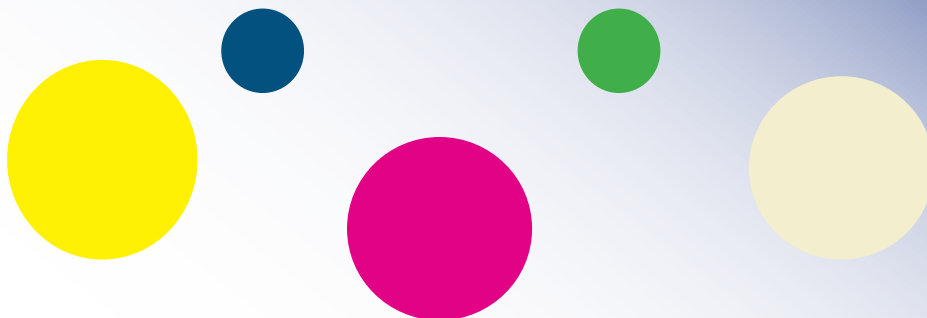


WIC staff in attendance at the Employee Appreciation Ceremony on November 10, 2011. L to R (front) Monica Sodipe, Suman Madan, Lindsay Adler, L to R (back) Laura Morrison, Nora Seals, Jeanne Baker, Anita Floyd, and Natalie Clements

We wish the very best to all of our retirees, and they will all be missed. Their dedication of service to the WIC program is much appreciated.



Reba Brannan, Area 5 Nutrition Director



Area 5

Dekalb County

Congratulations to the Dekalb County WIC Program! They had a 90% show rate for the month of January 2012. We appreciate and thank the DeKalb County staff for their diligence in calling all of the patients on the day before to remind them of their impending WIC appointments.

Etowah County

The Etowah County staff has done a wonderful job in promoting nutrition and breastfeeding education with the bulletin boards in their respective lobbies.

Tracey Stanley, ASA 2, made a bulletin board promoting Heart Healthy Foods Month for the month of February 2012. The Etowah County Breastfeeding Peer Counselors made a bulletin board showing the reasons to breastfeed



Heart Healthy Foods bulletin board for Etowah County



Etowah County Breastfeeding promotion bulletin board

Shelby County

The Shelby County nutritionists promoted Heart Health Month by encouraging more exercise and by putting up a new bulletin board in their lobby. Participants are always glad to have something new to look at when they come in for pickups.



Shelby County promoted Heart Health month by creating an exercise bulletin board

We are very glad to have such creative people working with the Alabama WIC Program!



Cindy Templeton, Area 6 Nutrition Director

Area 6

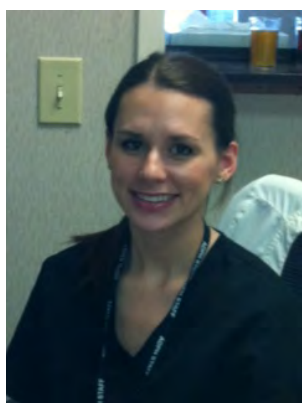
Jo Hunter, Registered Nurse, from the Hemocue Company provided training on the proper technique for capillary sampling at the Area 6 nutrition staff meeting on January 27, 2012. The nutrition staff practiced the "new" technique on each other to familiarize themselves with the new and proper technique for capillary sampling.



L to R: Jenny Know, Cathryn Bates, and Jo Hunter

Chambers County

Anne Ponder, Nutrition Associate, began her employment with the Chambers County WIC Program on December 1, 2011. Anne is a graduate of Auburn University and has spent the last three years working in the Georgia WIC Program. Anne is married and has a precious son, Ford, born in September 2011. We are so excited to have Anne in Chambers County and with the Alabama WIC Program!



Anne Ponder, Nutrition Associate

Calhoun County

Amy Minish, Registered Dietitian, returned to the Calhoun County Health Department as the WIC Coordinator in October 2011. Amy previously worked in Area 8 and with the Regional Medical Center in Anniston, Alabama, as a contract employee certifying WIC moms and babies. Amy is a Samford University graduate and is married and has two adorable daughters, Ava, age 8, and Annie, age 4. Welcome back, Amy!!



Amy Minish, Registered Dietitian

Amy Minish, Registered Dietitian, designed the unique Halloween bulletin boards. Becky Dawson, Nutrition Associate, and Cathryn Bates, Nutrition Associate, are very excited and appreciative to have some fresh ideas.



Halloween bulletin boards designed by Amy Minish, Registered Dietitian, Calhoun County

The Calhoun County Breastfeeding Peer Counselors organized a luncheon for the WIC breastfeeding mothers to kickoff its monthly support group meetings. The luncheon was held at the Calhoun County Health Department in November 2011. The food and door prizes were donated by local businesses. The luncheon was enjoyed by several breastfeeding moms and the clinic staff as well.



Denise Pope, Area 7 Nutrition Director

Area 7

There have been several significant facility and personnel changes in Area 7. Nikki Sanford, Nutrition Associate, Outreach Coordinator for Area 7 since February 2010 transferred to the Alabama Strategic Alliance for Health Program on November 1, 2011. Nikki's skills as a Nutrition Associate are now being used to partner with community organizations to address the impact of chronic disease. Nikki will be greatly missed by WIC!

Brenda Anthony, BSN, RN, became the Area 7 Nursing Director as of November 16, 2011. Brenda has worked for the Alabama Department of Public Health (ADPH) for 25 years. She started as a Staff Nurse in Hale County and has worked in numerous roles throughout her career at the county, area, and state levels. The Area 7 staff is very excited about having a full-time Nursing Director. Prior to Brenda's coming aboard, Area 7 had to share a Nursing Director with Area 9. Brenda has a good working knowledge of the WIC program and will be a tremendous asset to the Area 7 clinics.



L to R: Denise Pope, MS, RD, Area Nutrition Director; Brenda Anthony, BSN, RN, Nursing Director; and Debbie Jones, Clerical Director (Area 7 & 9)

Lowndes and Perry Counties

Janice Jones, ASA II, of Lowndes and Perry Counties, has also transferred 60% of her time to the Alabama Strategic Alliance for Health Program. Janice is continuing to provide WIC support to clinics in both Lowndes and Perry Counties as well as filling-in when and where she's needed. We are glad that Janice is continuing to work in WIC on a part-time basis.

Cindy King, Nutrition Associate for Lowndes County, resigned in January 2012. Cindy began working with WIC part-time in

April 2010. Cindy is planning to spend time with her husband by helping him with his business. She also plans to spend some quality time with her two teenage children.

Shae Hall, ASA II, transferred from the Lowndes County Health Department to the WIC Training Clinic, Montgomery, Alabama, on March 16, 2012. Shae is a native of Lowndes County but lives in Montgomery. Shae has worked in Lowndes County since October, 2010, and was the main WIC clerk in Lowndes County.

The Fort Deposit satellite clinic in Lowndes County closed on March 21, 2012. This clinic opened in November 2010 and provided WIC services to Fort Deposit residents one day per month. Due to reduced funding and staff changes, it became necessary to close this clinic.

The Gilberttown satellite clinic in Choctaw County closed on October 31, 2011. This clinic opened in November 2010 and provided WIC services to residents of southern Choctaw County. While the clinic was convenient to local residents, the number of WIC participants utilizing the clinic did not justify the clinic expense at this time.

Wilcox County

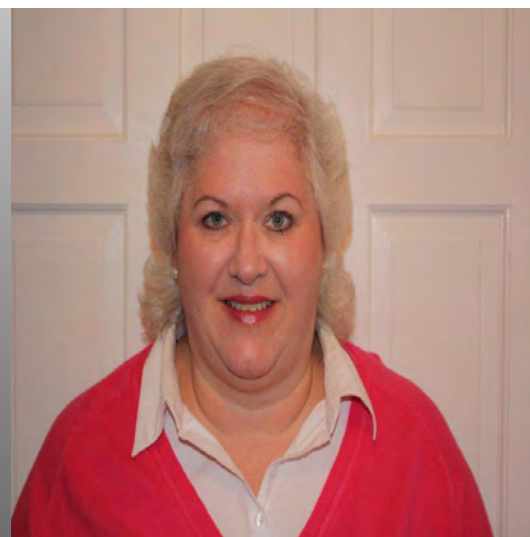
Shanna Huggins, Registered Nurse, was named WIC Coordinator for Wilcox County.

Pat Steadham, Registered Nurse, retired effective December 1, 2011. Pat was the WIC Coordinator at the Wilcox County Health Department. Pat had been employed in Wilcox County for eight years. A retirement luncheon was held in her honor on Monday, November 21, 2012. Pat plans to spend her retirement enjoying her family.



Pat Steadham (2nd from left) and family at retirement

Alisa Champion, Area 8 Nutrition Director



Area 8

Lee County

Jessica Shelton and Serra Bilgili, Nutrition Associates, represented the Lee County Health Department at the Mended Hearts Health Fair event in Opelika on March 24, 2012. They passed out various WIC promotional items such as pens, clips, bracelets, cups, and lunch containers. They displayed several WIC brochures and WIC Program eligibility flyers were given out as well as smart snacking and healthy choices brochures to several families in the community.



L to R: Serra Bilgili, Nutrition Associate, and Jessica Shelton, Nutrition Associate - Mended Hearts Health Fair - Opelika,



WIC Display Table at Mended Hearts Health Fair

Montgomery County

LaCarsha Witherspoon, Nutrition Associate, attended a Healthy Lifestyles meeting of the Crest Project at the Freewill Baptist Church on October 20, 2011. The target audience was the surrounding community. There were approximately twenty to thirty people that viewed and/or visited the display table. Nutrition Education and physical activity materials, brochures about the WIC Program: Smart Ideas for Healthy Eating, Portion Size Awareness, Effortless Exercise, Eating More Fruits and Veggies as well as healthy snack information were available to the audience. LaCarsha also attended a health fair at St. John AME (African Methodist Episcopal) Church in Montgomery on October 20, 2011. The target audience was the surrounding community. Approximately fifty to seventy people visited the display table. Brochures about the WIC Program, were available for the audience to pick up. Some of the other vendors who participated in the health fair were Cope Pregnancy, Gift of Life, American Family Care, Mental Health Clinic, Race for the Cure, and a Diabetes Educator from Cooper Green Hospital in Birmingham. Some of the activities included Zumba, health screenings, healthy eating lectures, and games. Several door prizes were given away as well. It was a very successful and enjoyable time for exhibitors and the community.

Chilton County

On Saturday, February 11, 2012, Amy Cleckler, Nutrition Associate of Chilton County and LaCarsha Witherspoon, Nutrition Associate of Montgomery County attended the "Sensational Saturday Childcare Conference." WIC materials and promotional items, such as nail files, pens, magnets, lunch totes, and bracelets with nutrition information on them were available. In addition, the My Plate materials as well as Smart Snacking materials were available. They also had breastfeeding information available to show the importance of breastfeeding to the community.



Nancy Johnson, Area 9 Nutrition Director

Area 9

In November 2011, the County WIC Coordinators and Nutrition Associates had their staff meeting at the new Area 9 office in Bay Minette. The meeting agenda included Crossroads, WIC manual changes, formula updates, voter registration, efficiency strategies, food packages, outreach efforts, and vendor and breastfeeding updates. The providers also had the opportunity to network with their colleagues at the beginning of the meeting while enjoying refreshments of fresh fruit and pastries.



L to R; (seated) Teresa Marshall, Mary Arnold, Avis Whitworth, Margaret Parnell, Cynthia Turberville; (2nd Row) Edna Cunningham, Shelia Burkett, Nitza Matthews, Sharon Eiland, Alana Salter, Rosemary Frost, Liane Martin, Nancy Johnson, Lori Nesmith, Jill Lee, and Phyllis Redmon

On January 1, 2012, Margaret Parnell, RN, Nurse Supervisor, retired after forty-four years of Public Health service. Among her many duties, Margaret served as the County WIC Coordinator for both Washington and Clarke Counties. In April 2012, Kay Odom, RN, from Washington County retired after 22 years of service, and Lynn Hodges, ASA II, for Baldwin County retired after 8 years of service. Although, Kay, Margaret, and Lynn will be greatly missed by the Area 9 counties, they wish them the very best in their retirement.



L to R: Rickie Elliott, Area 9 Administrator, and Margaret Parnell, RN, at retirement celebration



L to R: Kay Odom, RN, Margaret Parnell, RN, and Ginger Busby, RN

Area 9 (cont.)

As of December 1, 2011, Kaye Dunn, BSN, RN, assumed the role of the new Area Nursing Director after Debbie Thomasson's retirement in September 2011. Kaye previously served as the Nurse Supervisor for Baldwin County. Welcome aboard Kaye!

Escambia County

The WIC garden at the Escambia County Health Department (Brewton) continues produce a great harvest! Phyllis Redmon, Nutrition Associate, and the WIC children planted a winter garden of turnips, mustard, collards, spinach, carrots, rutabagas, and some herbs. Farmer Redmon is already thinking and planning for her Spring garden of green beans, tomatoes, okra, and potatoes!



Phyllis Redmon, Nutrition Associate, Escambia (Brewton) County Health Department

Escambia County Health Department (Brewton) employees Veronica McKinney and Rhonda Hall take the time to review their appointment schedule before making reminder phone calls about upcoming WIC appointments.



L to R: Veronica McKinney and Rhonda Hall

Monroe County

Recently, the clinic staff of Monroe County met with Nancy Johnson, RD, Area Nutrition Director, to discuss ways to improve their documentation of PHALCON notes between the clerks and the providers. The meeting was very productive with ideas to improve efficiency in their clinic.



L to R: Donna Matheny, Monique Tucker, Rosemary Frost, and Debra Oakley

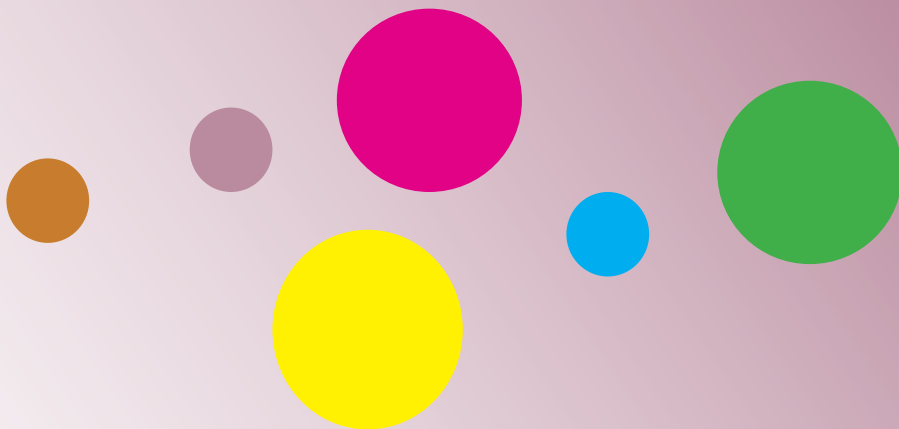
Due to the hard work and dedication of the WIC staff, the evening WIC clinic at the Baldwin County Robertsdale site continues to be a big hit with working families in the area. Nancy Hunter, Lisa Weatherwax, and Brigitta Lister all rotate Thursday nights to provide this much needed service. The clinic stays open until 6:00 PM on Thursdays to accommodate the WIC families with appointments and food instrument pick-up.



L to R: Lisa Bowman, Lynn Hodges, Nitza Matthews, Lisa Weatherwax, Brigitta Lister, Sharon Eiland, Monica Mabe, Liane Martin, and Deborah Gabel



Debbie Curran, Area 10 Nutrition Director



Area 10

The Area 10 County WIC Coordinators sponsored a foster child for Christmas in 2011. A Christmas wish list requested by the four year old foster child was sent to each of the coordinators. The WIC Coordinators took their lists and purchased and wrapped the gifts requested by the four year old. The coordinators really enjoyed helping a child that otherwise might not have received any or as many gifts for Christmas. It was such an enjoyable time; we have decided to continue this tradition and alternate the county site from which the recipient is chosen each year.



L to R (Front Row) Amy Howell, Karen Tipton, Debbie Curran, Ann Miller, Michelle Knight, Rick Brewer (Back Row) Mary Fairfield, Karen Campbell, Malicia Reynolds, Jody Lee, Theresa Person, and Patty Rushing

Houston County

Area 10 congratulates Carole Ann Correll on the birth of her twin girls. The twins were born on October 14, 2011, with Ava Ann weighing 5 pounds and 6 ounces and Ana Jo weighing 6 pounds and 11 ounces. Carole Ann has already returned to work at the Houston County Health Department.

Crenshaw and Henry Counties

Congratulations to the staff at Crenshaw County Health Department and Henry County Health Department for meeting their caseload goals. Crenshaw met or exceeded their goal for the months of July, August, September and October 2011. Henry exceeded their goal for September and December 2011. Job well done, and keep up the good work !!

Dale County

Pam Newman retired from the Dale County Health Department on December 1, 2011. Pam worked as a Nutrition Associate for 31 years. On her last day of work, a WIC participant who had heard about her retirement called and thanked Pam for all that she had done for her. Pam has always been a very outspoken advocate for the WIC program. Pam will truly be missed, but we wish her much happiness with her retirement. She tells us that we will see her again as she will be bringing participants to their WIC appointments!



Pam Newman, Nutrition Associate, retired from the Dale County Health Department after 31 years of service.

Area 10 (cont.)

Pike County welcomes a new clerk, Melanie Woodrow, ASA II. Melanie began working on January 3, 2012.

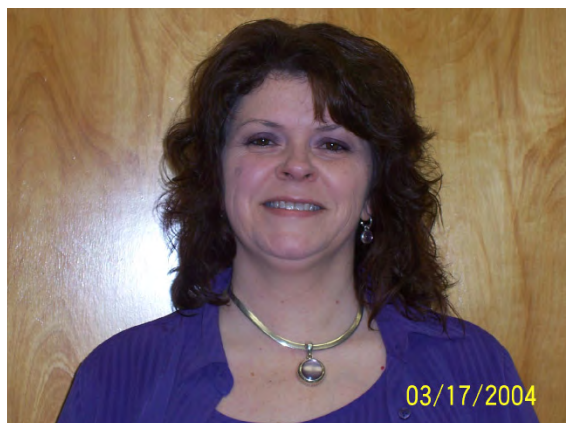


Melanie Woodrow, new WIC Clerk for the Pike County Health Department

Area 10 welcomes on board two new clerical staff members Ronda McCloud, ASA II, and Audrey Grice, ASA II. Ronda and Audrey will be working in Coffee and Dale counties, respectively.



Ronda McCloud, Coffee County clerical staff



Audrey Grice, Dale County clerical staff

Elizabeth Smith, Area 11 Nutrition Director



Area 11

The WIC Program hosted a food drive to benefit the Bay Area Food Bank in December 2011. The Mobile County Health Department employees showed their generosity by donating 1,090 pounds of food, enough to provide 838 meals for needy families and individuals. What an accomplishment! Those were the words Karla Gardner of the Bay Area Food Bank used to describe the success of the Health Department's holiday season food drive.



Bay Area Food Bank

The Area 11 WIC nutritionists are coordinating the ScaleBack Alabama Campaign for Mobile County. We have a total of 84 Mobile County Employees enrolled in the 10 week contest. The nutritionists host lunch-n-learn sessions on a weekly basis for all prospective and interested employees.

Area 11 is celebrating two new additions to Our WIC family! Kimbe Hawthorne welcomed Michael Williams, Jr. into the world on January 9, 2012. Jessica Rose welcomed Chloe Faith Crimson Holmes into the world on December 8, 2011. Congratulations!!



L to R: Jessica Rose and Kimbe Hawthorne

Area 11

The Mobile County Peer Counselors in attendance at their monthly meeting with Meridith Gardner.



L to R (Front) Andrea Portis, Lillian Portis, Meredith Gardner, JBC, Margaret Miller, and Natalie Miller. (Back) Cheryl Martin, Rhonda Ward, Emmie Powell, and Silas Powell

Sommerlyn Mitchell, Outreach Coordinator for Area 11, represented Mobile County at the Azalea Festival in Semmes, Alabama.



Sommerlyn Mitchell, Outreach Coordinator for Area 11

Donald E. Williamson, M.D.,
State Health Officer

Thomas M. Miller, MD, MPH,
Deputy Director for Medical Affairs

Grace H. A. Thomas, M.D., F.A.C.O.G.,
Assistant State Health Officer for Family Health Services

Chris Haag, Deputy Director,
Bureau of Family Health Services

Carolyn Battle, Director,
Division of WIC, Bureau of Family Health Services

Geneva Hunter, Editor and Graphic Designer,
WIC Operations,
Division of WIC, Bureau of Family Health Services

Contributing Resources,
Development Media Branch, Bureau of Health Promotion and Chronic Disease

This is a publication of the Alabama Department of Public Health, Bureau of Family Health Services, Division of WIC. In accordance with Federal law and U.S. Department of Agriculture (USDA) policy, this institution is prohibited from discriminating on the basis of race, color, national origin, sex, age, or disability. To file a complaint of discrimination, write USDA, Director, Office of Adjudication, 1400 Independence Avenue, SW, Washington, DC 20250-9410 or call toll free (866)632-9992 (Voice). Individuals who are hearing impaired or have speech disabilities may contact USDA through the Federal Relay Service at (800) 877-8339; or (800) 845-6136 (Spanish). USDA is an equal opportunity provider and employer.

WIC Toll-Free Telephone Number: 1-888-942-4673 / WIC website: www.adph.org/wic