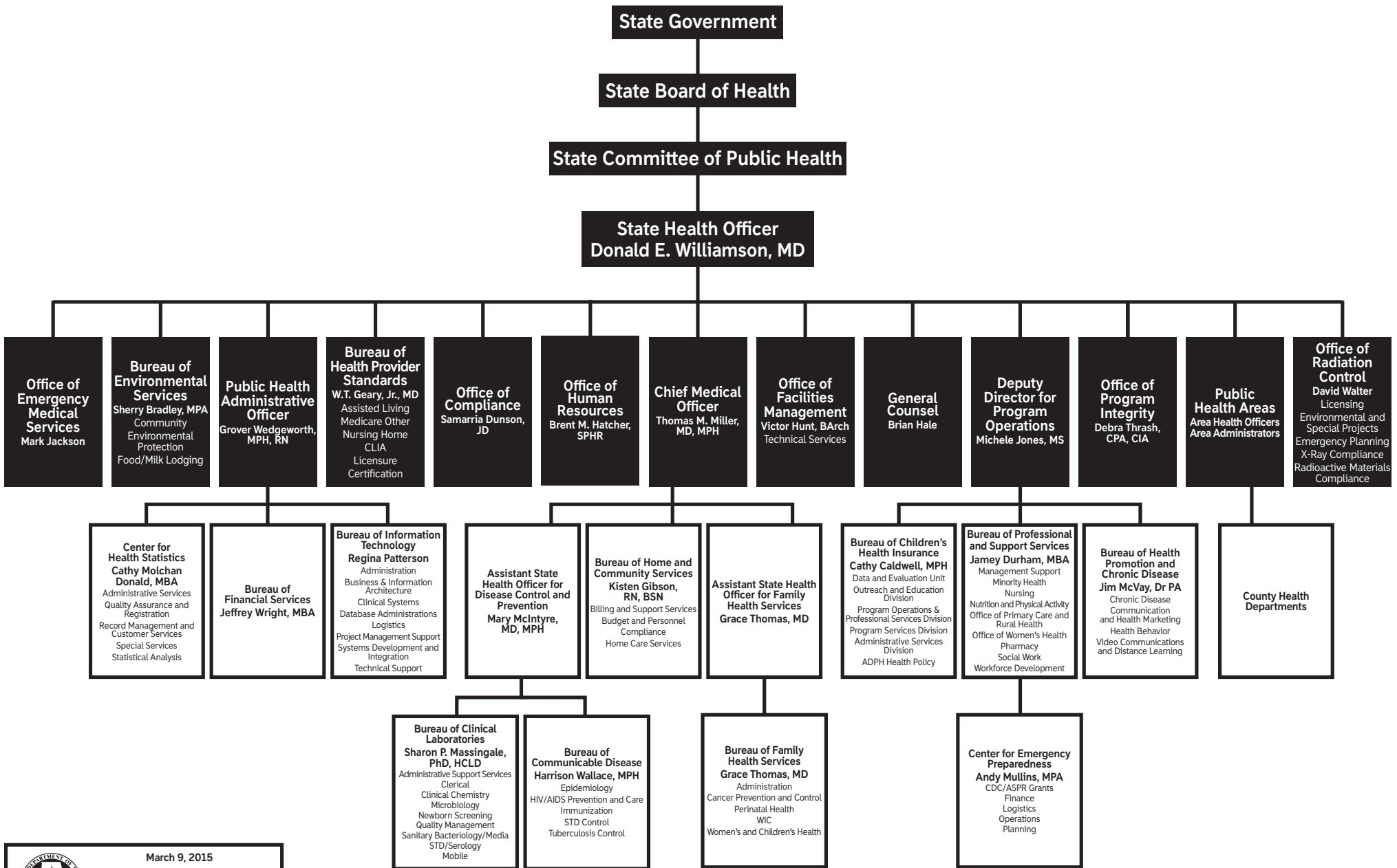


ALABAMA DEPARTMENT OF PUBLIC HEALTH



Bureau of Family Health Services

Director - Grace Thomas (PHPD)

Executive Secretary
Theresa Lawson (ASA 3)

**Executive Secretary/
Personnel Management**
Angie Bates (ASA 3)

Bronett Terrell (ASA 1)

Deputy Director - Chris Haag (HSA 4)

Consultants Pediatric
Karen Landers (PHPD)

Oral Health
Robert Meador (PHD 3)
Sherry Goode (DEC 2)
Ashley Vice (PI Spec)
Caroline Jones (ASA 2)

Special Projects
Dena Donovan (HSA 2)

Administration Division

Director
Dan Milstead (HSA 3)
Assistant Director
Rae Strength (HSA 1)

Angie Bates (ASA 3)

Cancer Prevention and Control Division

Director
Nancy Wright (HSA 3)
Assistant Director
Kumari Seetala (HSA 2)

Angela Gaston (ASA 3)

Perinatal Health Division

Director
Janice Smiley (HSA 3)
Assistant Director
Tammie Yeldell (Epi Sup)

Vacant (ASA 3)

Women's and Children's Health Division

Director
Annie Vosel (HSA 3)
Assistant Director
Dawn Ellis (NM)

Justin Tyson (ASA 3)

WIC Division

Director
Amanda Martin (HSA 3)
Assistant Director
Jean Fulton (Nutr A)
Vacant (NAA)

Cassandra Glover (ASA 3)
Vacant (ASA 1)

Women's Health - Medical
Vacant (PHPS)
Theresa Lawson (ASA 3)
Twila Pigg (ASA 2)
Beth Nichols(NPD)
Beth Allen (NPS)
Deborah Davis (NPS)
Neysa Hernandez (NPS)
Tina Pippin (NM)

Electronic Health Record
Laurie Stout (NM)
Armita Shepherd (HSA2)
Claude Quimet (RSE)

Financial Management
Dan Milstead (HSA 3)
Claudia Cauthen (ST.ACCT)
Nichole Young (ACCT)
Greg Roberts (AT)

Contract Management
Rae Strength (HSA 1)

Cancer Prevention
Kathryn Chapman (HSA2)
Stephen Jaye (HSA1)
Gavin Graf (HSA1)
Jeanne Summerlin (PI Spec)
Vacant (PI Spec)

Cancer Epidemiology
Justin George (Epi Sup)
Vacant (PHRA 2)

Cancer Registry
Xuejun Shen (HSA2)
Tara Freeman (PHRA2)
Sherry Attaway (CTR)
Mark Jackson (CTR Sr)
Teresa Trailer (PHRA2)
Diane Hadley (PHRA2)
Kandice Abernathy (PHRA1)
Crystal Jones (PHRA 1)
Vacant (PHRA 1)
Elaine Wooden (ASA3)
Shirley Williams (RSE)

Breast, Cervical and Colorectal Cancer
Kumari Seetala (HSA 2)
Kitty Norris (NS)
Kelli Hardy (NC)
Vacant (NC)
Rhonda Hollon (SW 2)
Marshetia Baldwin (ASA 2)
Nona Smith (ASA 2)
Cassandra Reynolds (ASA 2)
Michelle Rogers (ASA 2)
Janet Sudduth (ASA 2)
Brenda Dockery (ASA 2)
Vacant (ASA 2)
Vanessa Motley (HSA 1)
Hazel Cunningham (SW 2)
Jackie Wilson (HSA 1)
Vonda Buckhault (NC)
Elaine Gray (NC)
Cindy Hayhurst (NC)

Perinatal
Amy Stratton (NM)
Chyrl Willis (ASA 2)
Lisa Carter (NS)
Catherine Hanks (NS)
Gayle Whatley (NS)
Shirley Daniel (NS)

Collaborative Improvement and Innovation Network (COIN)
Amy Stratton (NM)

MCH Epidemiology
Tammie Yeldell (Epi Sup)
Krishona Lee (Epi Sr)
Izza Cagle (PHRA 3)
William Duncan (PHRA 2)

Newborn Screening
Cindy Ashley (NM)
Daphne Bates (ASA 2)
Rovetta Hanna (NS)
Delores Harrison (NC)
Rachael Montgomery (NS)
Seratia Johnson (NS)

Women's Health

Clinic Efficiency/Continuous Quality Improvement
Annie Vosel (HSA 3)
Vacant (ASA 2)

Family Planning Clinical Operations (Plan First)
Leigh Ann Hixon (NM)

Social Work
Meredith Adams (SW 4)
Chaun Paulk(SW 3)
Vacant (SW 3)
Melissa Godwin(SW 3)
Debbie Moulton (MBS)
Charlena Freenman (RSE)

Adolescent Pregnancy Prevention
Vacant (HSA 2)
Sandy Powell (NS)
Valerie Lockett (SW 2)
Misty Price (ASA 2)

Children's Health
Dawn Ellis (NM)
Janice Broaden (ASA 2)

Lead
Jacqueline Harris (NS)
Janice Broaden (ASA 2)

Early Childhood Comprehensive Systems (ECCS)
Dawn Ellis (NM)

Healthy Child Care Alabama
Janet Brealy (NS)
Shirley Lee (ASA 2)
Gerrie McMillan (NC)
Sarah Martha Miller (NC)
Debbie Parker (NC)
Daphne Pate (NC)
Nancy Wilson (NC)
Ann Fox (NC)
Cyndy Henderson (NC)
Ginger Letson (NC)
Crystal Page (NC)
Robyne Phillips (NC)
Marsha Galloway(NC)
Judy Cunningham (NC)

Nutrition Services
Jean Fulton (Nutr A)
Gail Mask (NAA)
Pat Vick (NAA)
Mandy Darlington (NAA)
Michell Grainger (NS)

WIC Training Clinic
Twanna Brown (NAA)
Carmalita Green (Nutri Sr)
Christine Long (ASA 3)
Sakitha Hall (ASA 2)

Breastfeeding/Peer Counseling
Michell Grainger (NS)
Alexis Aday (Nutri Sr)

Vendor Management
Stacey Neumann (HSA 2)
Valeria Patton (HSA 1)
Maxine Hawthorne (ASA 2)
Patty Geiger (Acct Clk)
Debora Free (Acct Clk)
Vacant (Acct Clk)
Cheri Reaves-Tillery (HSA 1)
Charlie Martin (Spec Inv)
Kenny Thomas (Spec Inv)
Vacant (ASA 2)
Vacant (ASA 2)


Electronic Benefits Transfer Project
Stacey Neumann (HSA 2)

Operations Branch
April Golson (HSA 2)
Vacant (ASA 2)
Vacant (HSA 1)
Geneva Hunter (HSA 1)
Phil Tucker (ASA 2)
Larry Harris (St Clk)

Crossroads State Agency Model (SAM) Project
Maggie Gates-Kilgore (UATC-CE)
Vacant (ASA 2)
Twanna Brown (NAA)

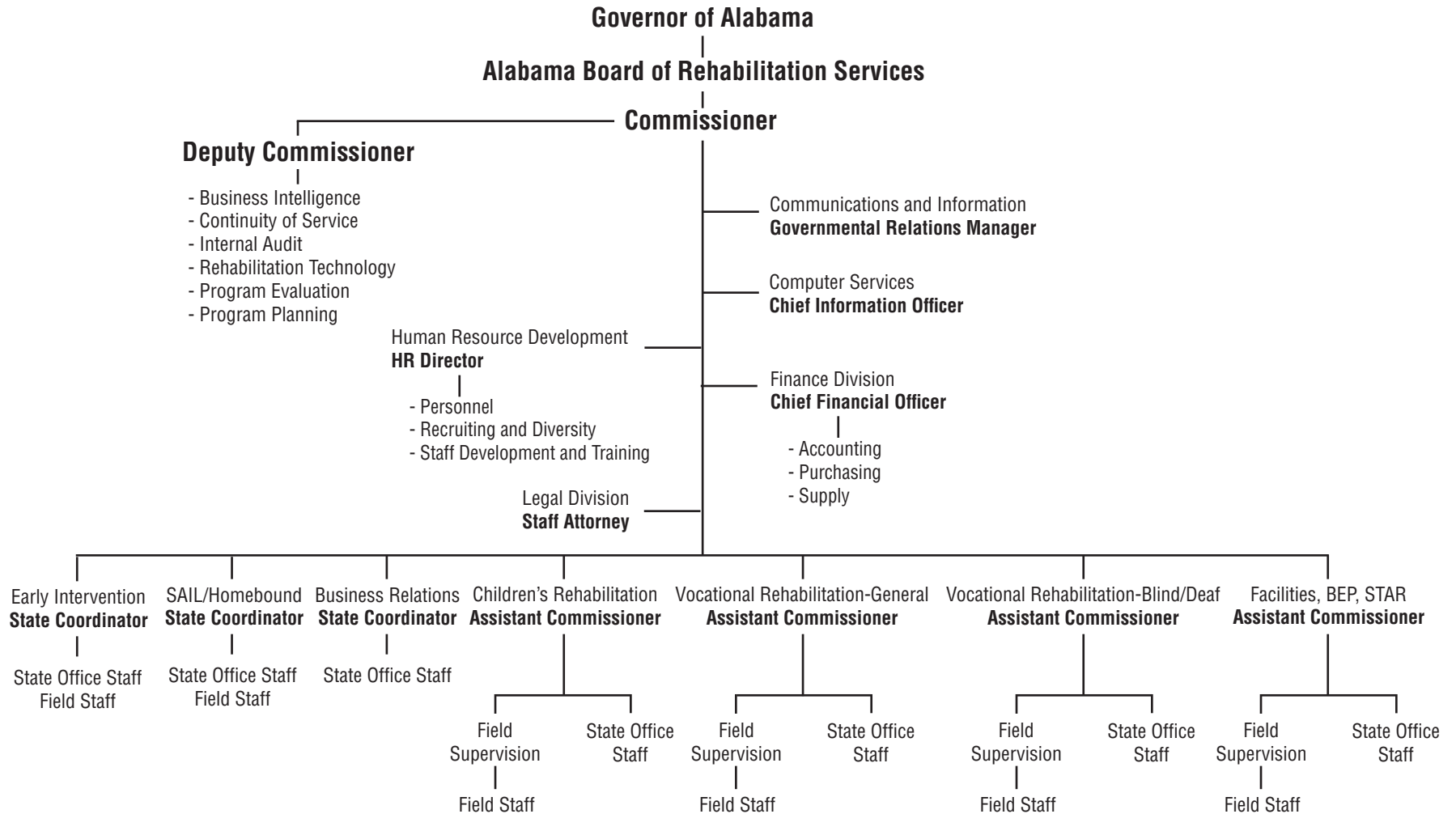
Abbreviations:

ACCT - Accountant	NS - Nurse Supervisor
ACCT Clk - Account Clerk	Nutr A - Nutritionist Administrator
ASA - Administrative Support Assistant	Nutri - Nutritionist
AT - Account Technician	Nutr. Sr - Senior Nutritionist
CA - Contract Audiologist	PHD - Public Health Dentist
CE - Contract Employee	PHPD - Public Health Physician Director
CTR - Certified Tumor Registrar	PHPS - Public Health Physician Senior
CTR Sr - Certified Tumor Registrar Senior	PHRA - Public Health Research Analyst
DEC - Dental Education Consultant	PI Spec - Public Information Specialist
Epi Sr - Epidemiologist Senior	RSE - Retired State Employee
Epi Sup - Epidemiologist Supervisor	SE - Senior Environmentalist
HSA - Health Services Administrator	Spec Inv - Special Investigator
MBS - Medical Care Benefits Specialist	ST ACCT - Staff Accountant
NAA - Nutritionist, Assistant Administrator	St Clk - Stock Clerk
NC - Nurse Coordinator	SPT - State Professional Trainee
NM - Nurse Manager	Stu. Aide - Student Aide
NPD - Nurse Practitioner Director	SW - Social Worker
NPS - Nurse Practitioner Senior	TC - Training Coordinator
	UACT-CE - User Acceptance Coordinator (contract employee)

 March 13, 2015
Grace Thomas Date



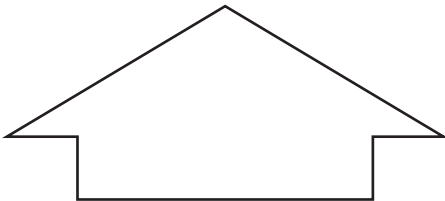
Alabama Department of Rehabilitation Services Organizational Chart



October 7, 2009

Cam Baswell

Commissioner, Alabama Department of Rehabilitation Services



Alabama's children and adults with disabilities

**State of Alabama
Children's Rehabilitation Service Division
Alabama Department of Rehabilitation Services
May 2014**

