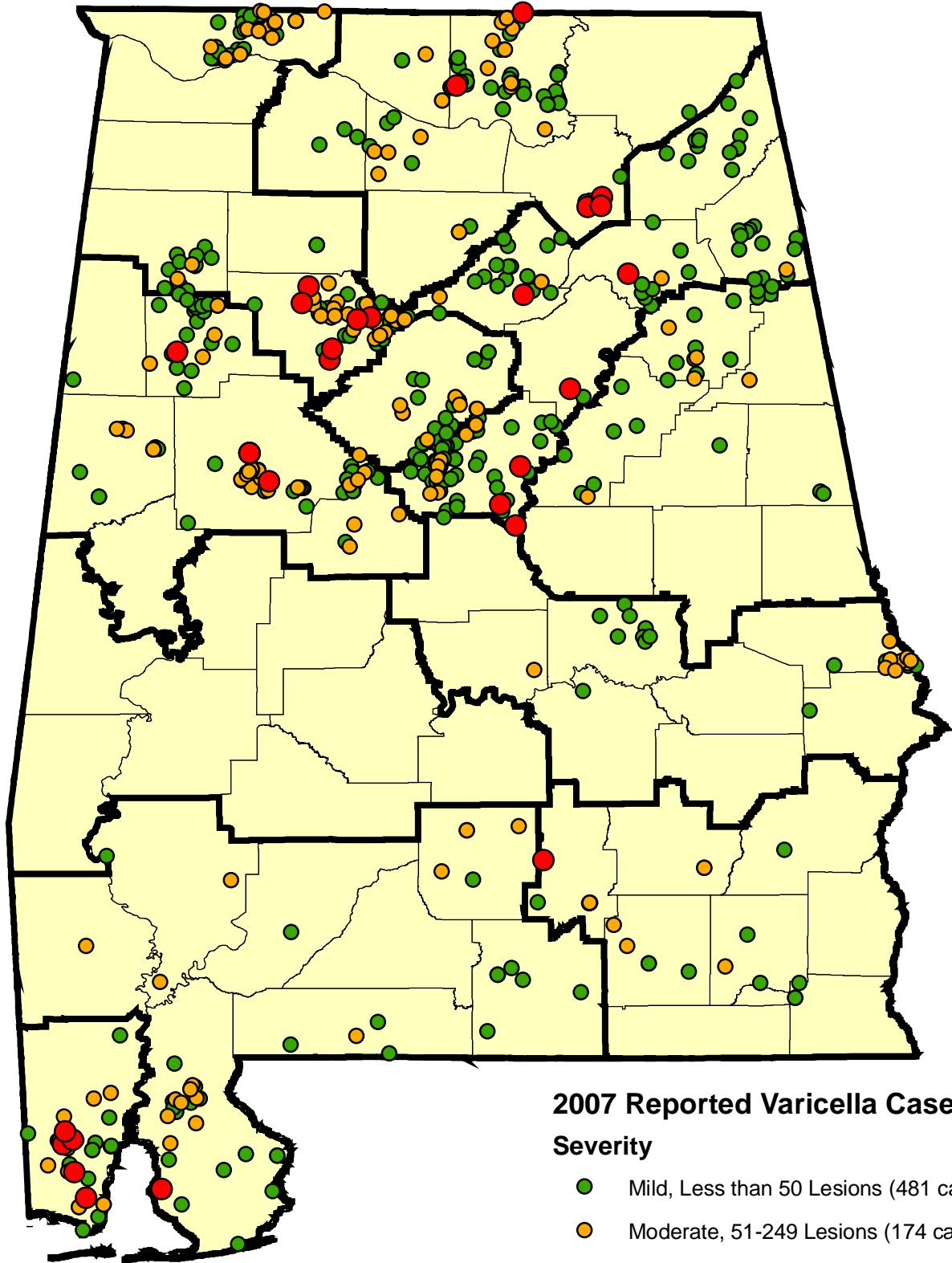


2007 Reported Varicella Cases by Severity, 686 Reported Cases* (449 Confirmed and 237 Probable)



*Some cases appear together because they live at the same address (ie siblings, parent/child) or addresses are close in proximity

**Total cases reflects varicella cases reported to ADPH Immunization Division as of February 19, 2008 that had an onset of symptoms between 1/1/2007 and 12/31/2007