

Fatality Management During a Pandemic and Other Emergency Events

Alabama Department of Public Health
Center for Emergency Preparedness
Cindy Lesinger
Pandemic Influenza and
Smallpox Coordinator



Disclaimers

- This conference series is intended as informational only
- There may be more questions than answers at the end of the day
- This topic is necessary to ensure comprehensive local preparedness

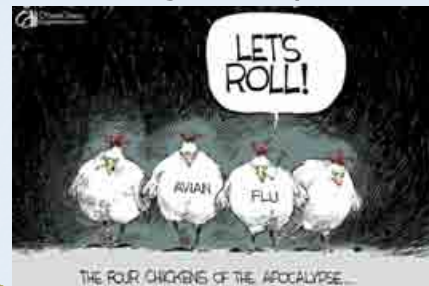


Disclaimers

- Fatality management is a county/community planning responsibility
- The real work will begin after this conference in your county/community.
- Assume all attendees have heard the standard PI presentation



Laugh or Cry?

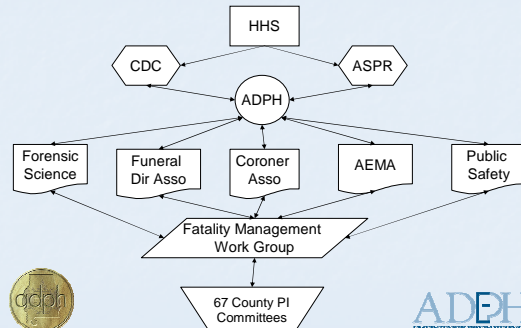


Overview

- | | |
|---------|----------|
| ■ Who | ■ How |
| ■ What | ■ Why |
| ■ When | ■ Survey |
| ■ Where | ■ Goals |



Who?



County Pandemic Influenza (PI) Planning Committee

- Public Health
- EMA
- Business
- Communications
- Education
- Faith-based
- First Responders
- Government
- Healthcare
- General Public
- Elected Officials
- Mortuary



What?

- CDC Priorities
 - Mass Vaccination
 - Antiviral Distribution
 - PH COOP
 - Community Containment
 - Communications
 - Laboratory and Surveillance
- ASPR Priorities
 - **Fatality Management**
 - **Medical Surge**
 - **Patient Surge**



What?

- Write the county EOP PI annex, including fatality management annex
- PI Fatality Management Issues
 - Arrange transportation
 - Arrange for decedents pick up
 - Daily death count
 - Temporary storage



When?

Alabama PI Operational Plan Timeline

- 4/16/2007 - first submission
- 1/31/2008 – submission for updates to ADPH COOP, Community Containment, and Mass Vaccination
- 5/14/2008 – All priorities must be updated and submitted
- 9/25/2008– All state plan assessments will be published



Where?

- Every county needs to plan and prepare
- Local emergency preparedness committee (LEPC)
- PI planning committee
- Or combination



How?

- 2007 CDC PI CA - \$123,000
 - educating mortuary colleagues
 - advise on standard protocols (i.e., criteria for land for short-term burials, documents to identify deceased, document death certificate, etc.)
 - Purchase equipment and supplies
 - Assist the department in the beginning and end of PI wave



How?

- 2008 ASPR PI CA - \$366,000
 - 12 boxes of Blood Stain Cards \$1,200
 - 2 - 19X35 Western Tents \$44,000
 - 30 Stretchers (Raven Litters) - \$12,000
 - 6 Stretcher Carriers - \$6,000
 - 6 Portable BioSeal kits - \$18,000
 - 1 Portable Mortuary Unit - \$150,000
 - Develop co PI & FM plans - \$268,000
- 2008 CDC PI CA - \$50,000
- 11 Fatality Management Conferences



How?

ADPH Resources Stockpiled

- 1,000,000 surgical masks
- 400,000 N95 masks
- 100,000 biological hazard kits
- 7,000 body bags



Most resources will be distributed to the counties based on population



Why?

- Not just a health issue, it is economical, political, social issue
- It will effect everyone at the same time
- Up to 30% of population will become ill
- Every county needs to be self sufficient
- There may be critical infrastructure disruptions



Survey Questions 1-4

1. Does your county EMA's EOP have a fatality management annex?
Y-25% N-70%
2. If yes, does it include temporary mass burial during a pandemic? Y-9% N-85%
3. Does your county have a coroner or medical examiner? C-84% ME-4%
4. Is your county's coroner a funeral director?
Y-42% N-54%



Survey Questions 5-8

5. How many funeral homes are in your county? 347
6. How many bodies can be processed* in 1 day? Assume full staff and supplies. 2445
7. How many bodies can be buried**in 1 day? Assume full staff and supplies. 1535
8. How many bodies can be cold stored and not processed* for an indefinite time? 268



* Processed is either embalmed or cremated
** Buried in an individual grave and not a pauper grave



Survey Questions 9-11

9. How many body bags are in the county? 2010
10. If supplies are disrupted during a pandemic, how many bodies can be processed*? 4332
11. If supplies are disrupted during a pandemic, how many bodies can be buried**? 3219



* Processed is either embalmed or cremated
** Buried in an individual grave and not a pauper grave



Survey Questions 12-14

12. If mortuary services staff is cut by 40% during a pandemic, how many bodies can be processed*? 1489
13. If mortuary services staff is cut by 40% during a pandemic, how many bodies can be buried**? 1285
14. Does your county pandemic influenza planning committee have a mortuary representative? **Y-31% N-58%**



* Processed is either embalmed or cremated

** Buried in an individual grave and not a pauper grave



ADPH Vision

Postpone and minimize the impact of pandemic influenza in Alabama.

ADPH Mission

- Ensure every Alabama citizen is aware of, planning for and preparing for the possibility of pandemic influenza (PI).
- Ensure every county/community is self sufficient during a pandemic (including fatality management).



Planning for an emergency will not be pleasant, but having no plan during an emergency will be much more painful.



Questions?

To get involved in your community contact your local county health department

To find out more information go to www.pandemicflu.gov or www.adph.org/pandemicflu

Alabama Department of Public Health
Center for Emergency Preparedness (334) 206-3394
Cindy Lesinger clesinger@adph.state.al.us or
Angela Stanley angelastanley@adph.state.al.us

